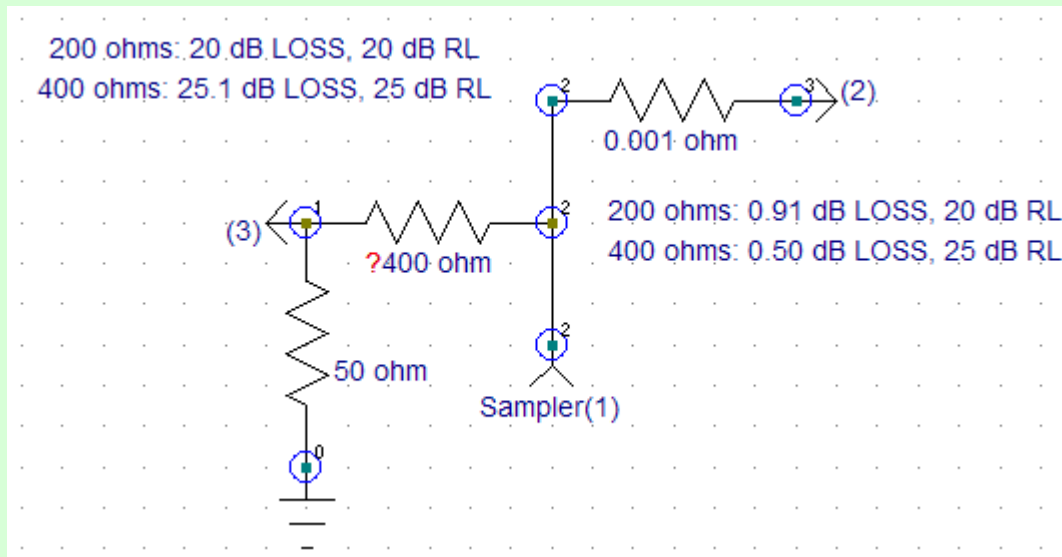
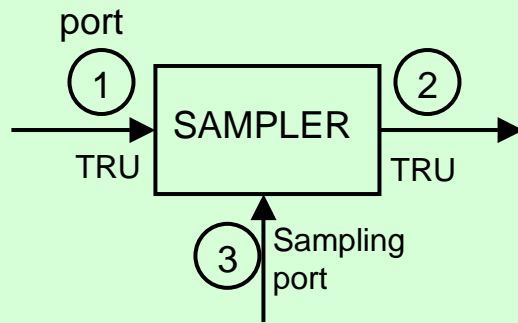


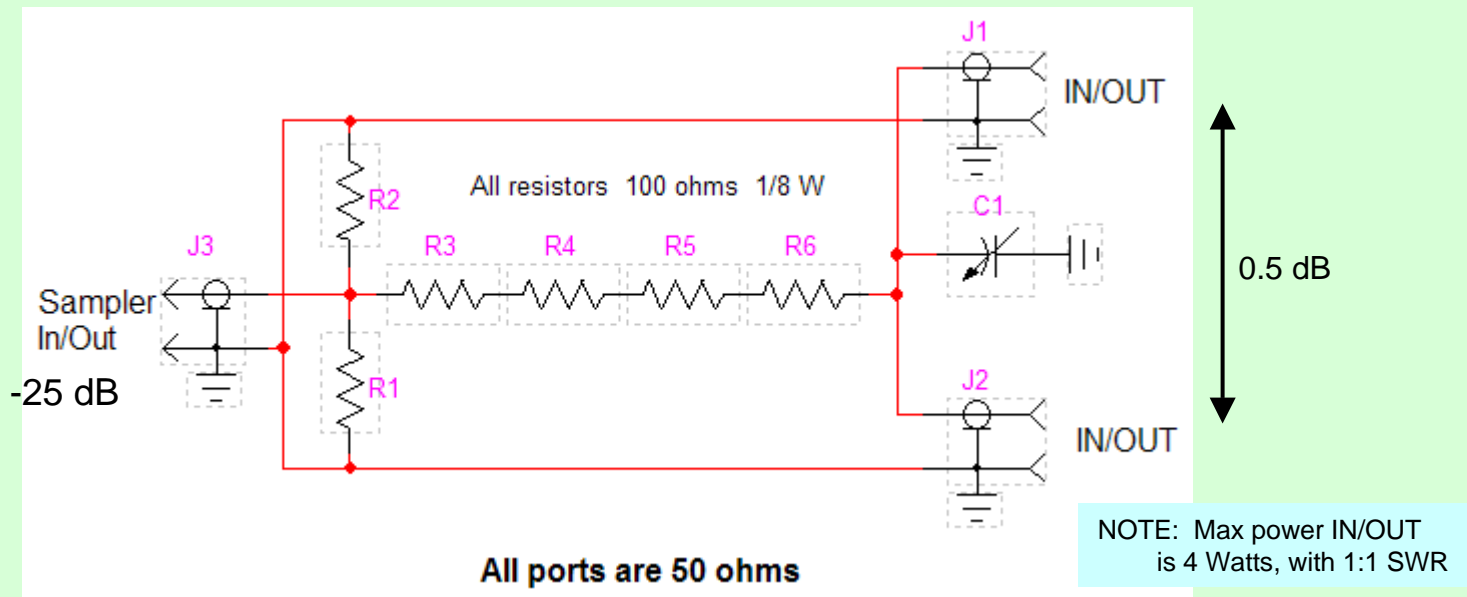
# A Wide Band Sampler

Jacques Audet VE2AZX  
ve2azx.net

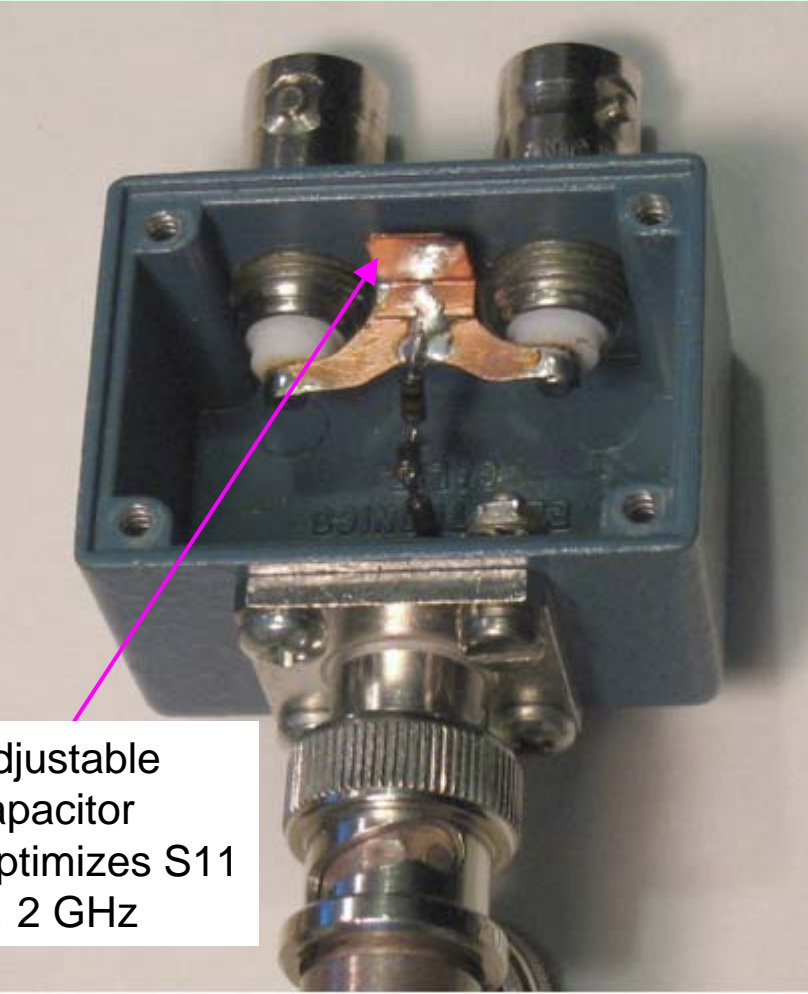
## SAMPLER DESIGN and SIMULATIONS



# SAMPLER SCHEMATIC



# SAMPLER PICTURES

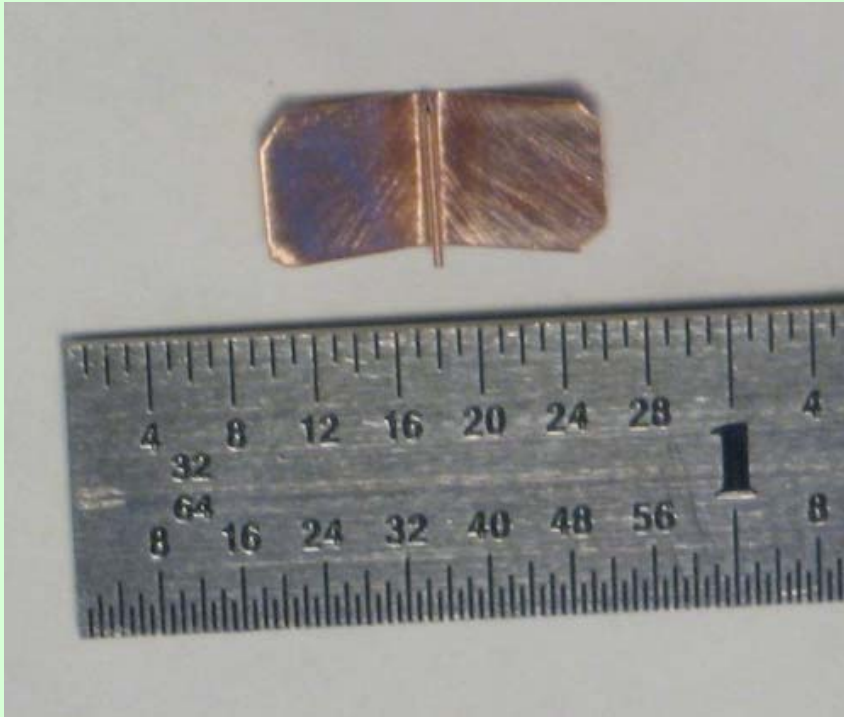


Adjustable capacitor  
Optimizes S11  
@ 2 GHz



## SAMPLER PICTURES

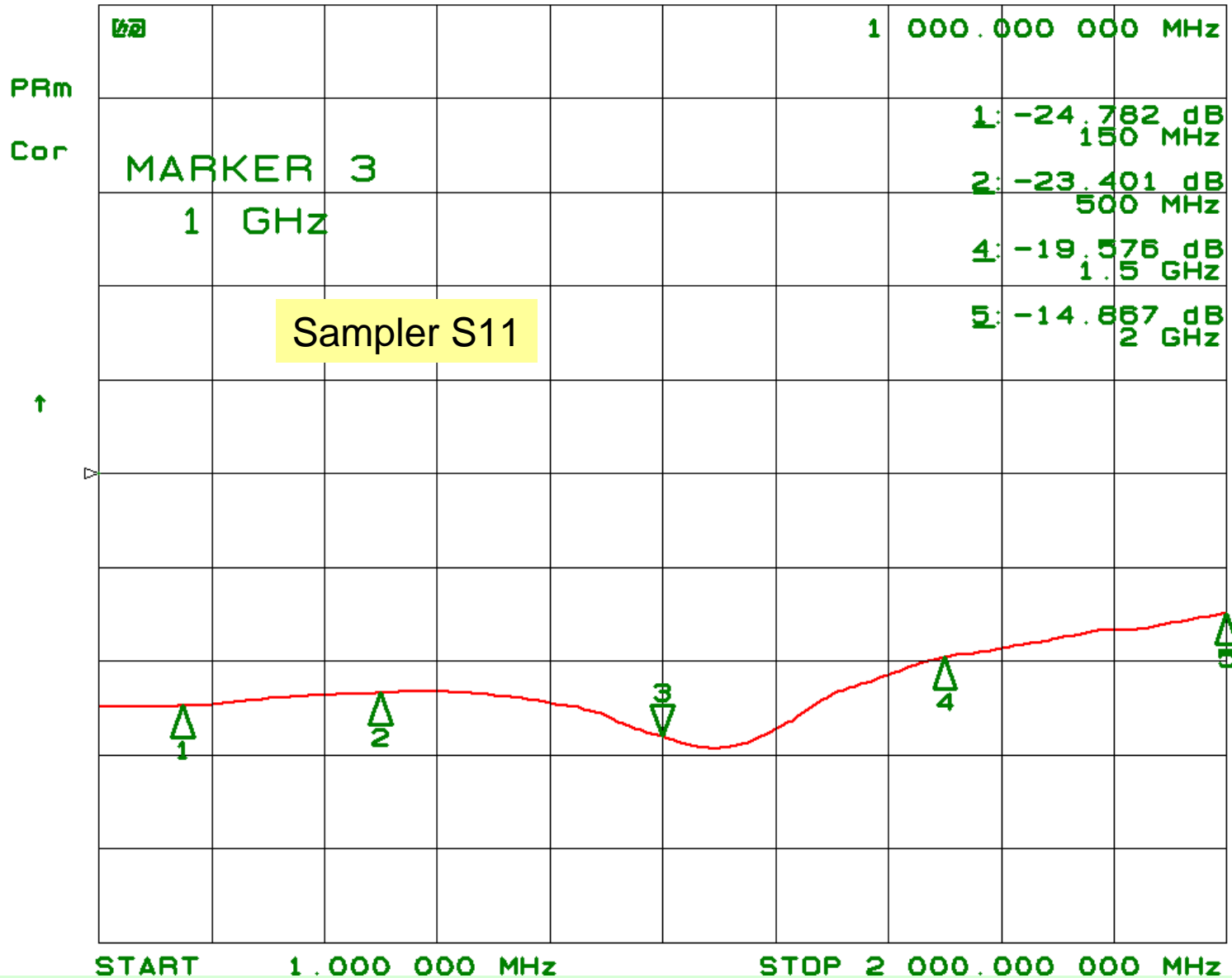
Adjustable capacitor before soldering



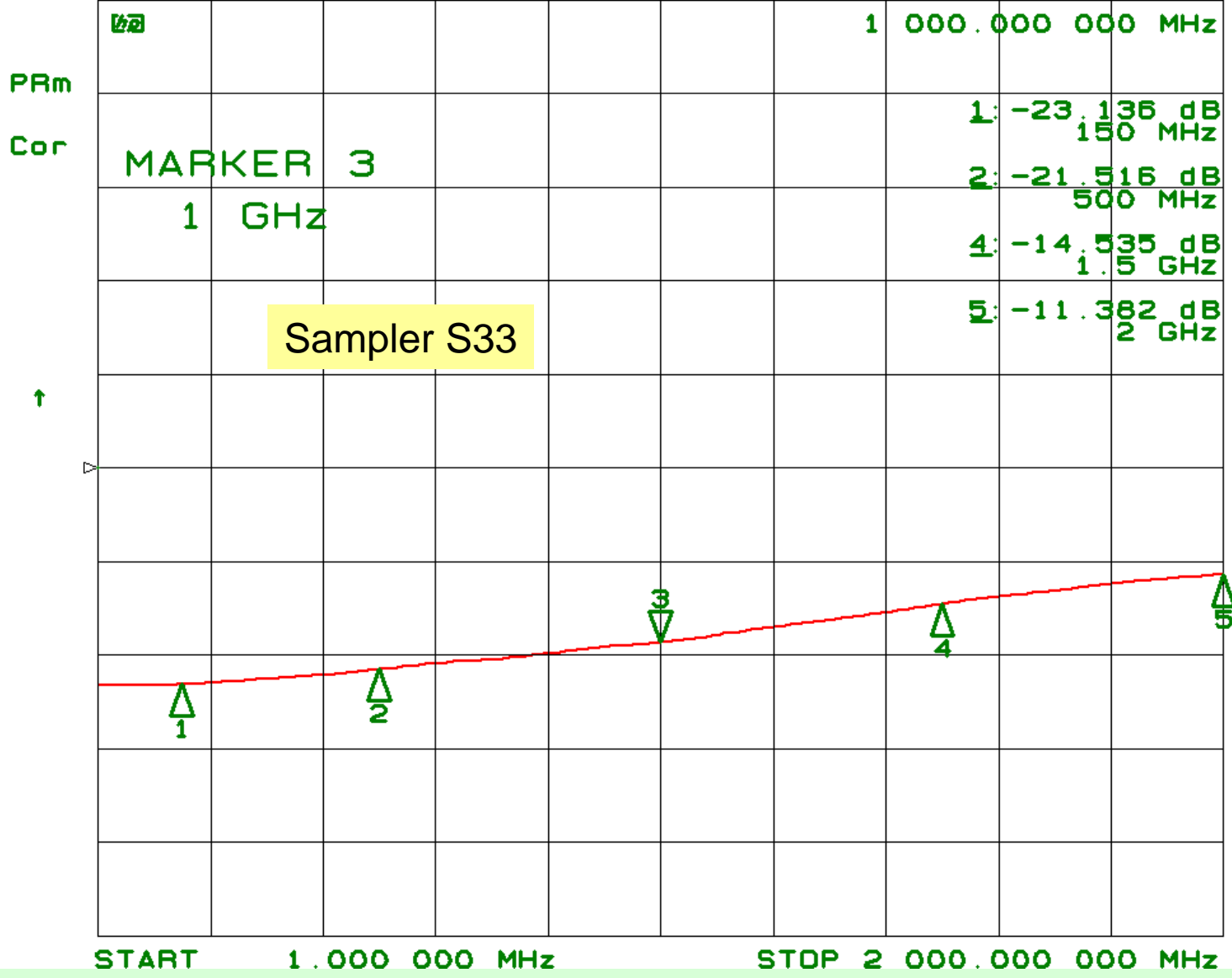
Note: Only required on  
wideband 2 GHz version  
Omit if sampler is only used at VHF

18 Jan 2012 17:58:41

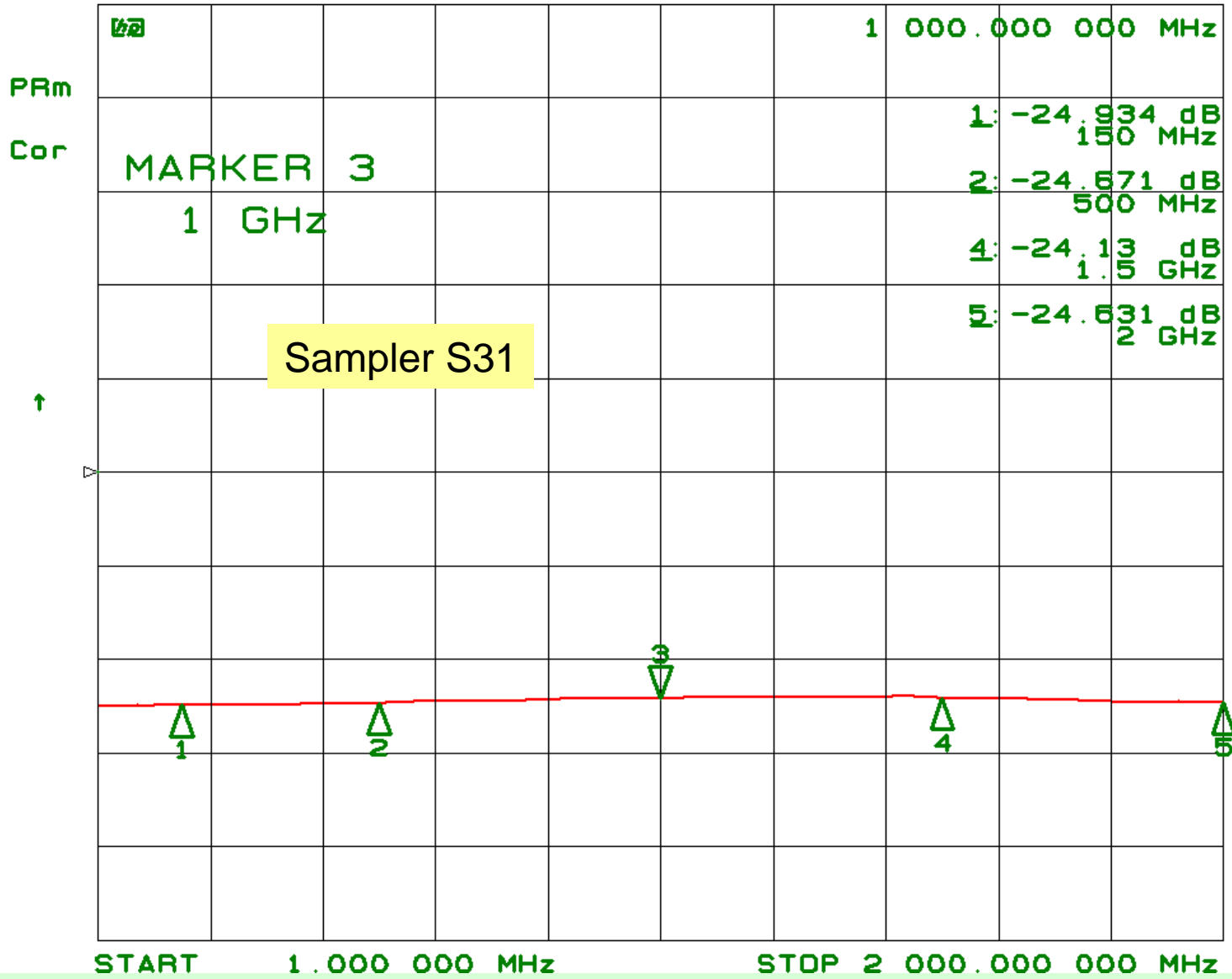
CH1 S<sub>11</sub> log MAG 10 dB/ REF 0 dB 3: -28.014 dB



CH1 S<sub>11</sub> log MAG 10 dB/ REF 0 dB 3: -18.65 dB



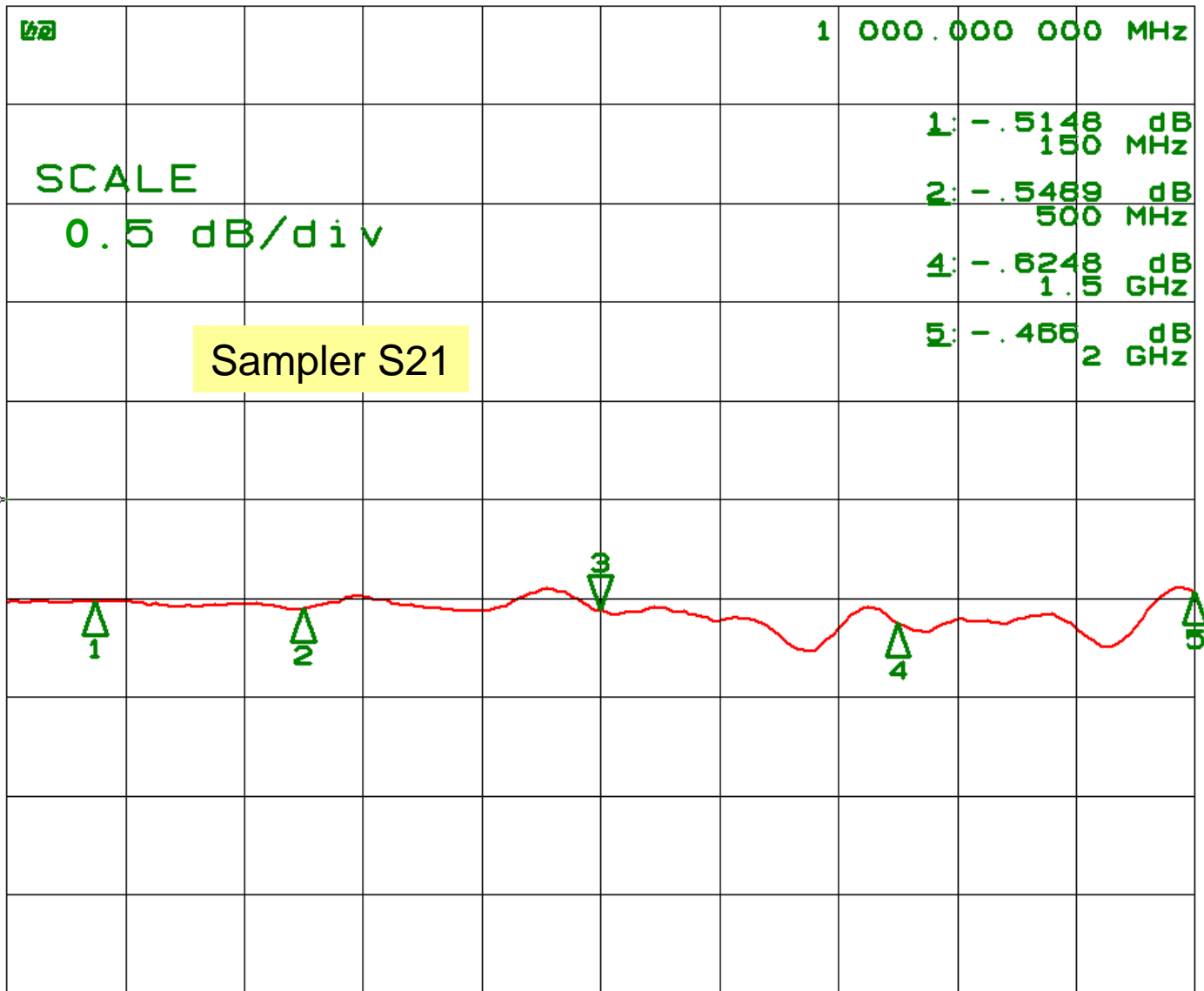
CH1 S<sub>21</sub> log MAG 10 dB/ REF 0 dB 3: -24.159 dB





18 Jan 2012 18:03:34

CH1 S<sub>21</sub> log MAG 0.5 dB/ REF 0 dB 3: -.5540 dB



START 1.000 000 MHz

STOP 2.000.000 000 MHz